

# nifty

## **TM64** TRAILER MOUNTED WORK PLATFORM



**69ft 7in (21.20m)**  
Working height

**39ft 6in (12m)**  
Working outreach

**Platform Rotation**  
Better platform positioning

**Unrestricted Outreach**  
500lbs capacity at max outreach

**Fully Proportional  
Hydraulic Controls**  
Simple, reliable &  
easy to maintain

**Hydraulic Outriggers**  
For quick and easy setup

**Bi-Energy Available**  
Optimizing utilization

**Traction Drive Option**  
Driven from the platform for easy  
maneuverability on site



**niftylift.com**

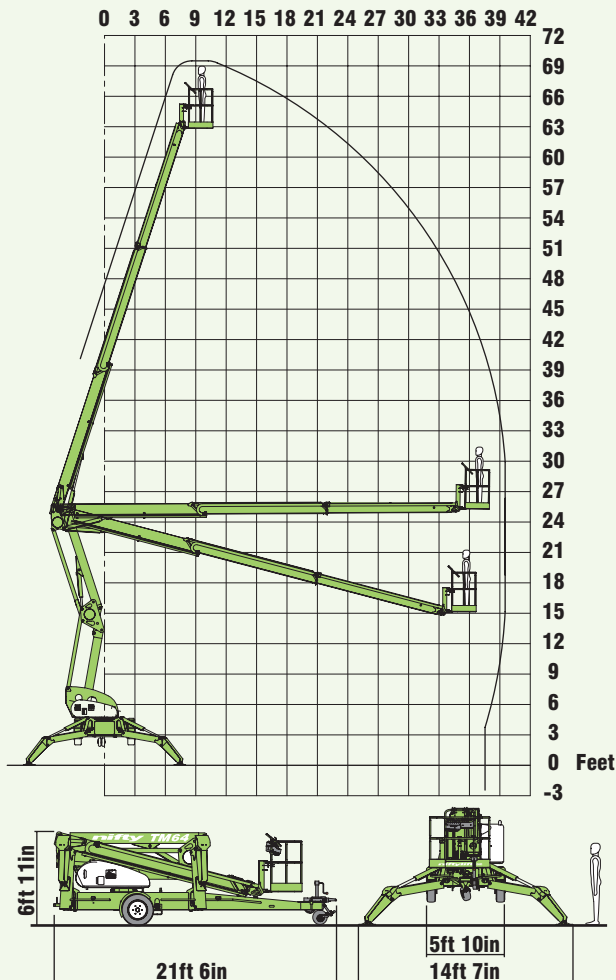


# nifty™ TM64

The Nifty TM64 has one of the largest unrestricted working envelopes in its class. Hydraulic outriggers make it quick and easy to set up and an optional traction drive system, operated from the platform, allows the TM64 to be positioned on site with minimal effort. Platform rotation provides the TM64 with greater maneuverability in the air and its fully proportional controls give the operator precise control when positioning the platform, even on hard to reach jobs.

## SAFETY FEATURES

- Pressure Sensitive Outriggers
- Audible and Visible Alarms
- Double Acting Cylinders
- Manual Recovery with Hand Pump
- Dual Controls (Platform & Base)
- Lock Valves on all Hydraulic Cylinders
- Overrun Brakes with Gas Spring Hand Brake
- Dual Harness Points
- Meets OSHA and ANSI regulations



The TM64's special boom design makes it ideal for working near walls or buildings. A single control allows its platform to move vertically while remaining parallel to the job, saving time and improving efficiency.

## SPECIFICATIONS

<b>Working Height</b>	69ft 7in	21.20m
<b>Platform Height</b>	63ft	19.20m
<b>Working Outreach</b>	39ft 6in	12m
<b>Slew</b>	360°	
<b>Width - Traveling</b>	5ft 10in	1.80m
<b>- Working</b>	14ft 7in	4.50m
<b>Height - Overall</b>	6ft 11in	2.12m
<b>Length - Overall</b>	21ft 6in	6.56m
<b>Weight</b>	7,276lbs*	3,300kg*
<b>Platform Rotation</b>	100°	
<b>Platform Capacity</b>	500lbs	225kg
<b>Platform Size</b>	4ft 11in x 2ft 4in	1.50m x 0.70m
<b>Control System</b>	Fully Proportional Hydraulic	
<b>Power System</b>	Mains Only Gas Only Diesel Only Bi-Energy (engine & mains)	
<b>Drive Option</b>	Traction Drive	

\* Weights may vary according to specification / power options, please confirm before ordering.

Due to a policy of continuing development and improvement, Niftylift reserves the right to change any specification without notice. Please confirm exact specification before ordering.

Supplied by:

**Manufacturers of trailer mounted, self propelled and vehicle mounted platforms.**

### NIFTYLIFT INC

825 North Driveway,  
Glen Ellyn IL, 60137-5726, USA  
Tel.: 1-800-NIFTYLIFT  
Tel.: 1-630-858-0822  
Fax.: 1-630-858-0520  
e.mail: aerialift@aol.com

### NIFTYLIFT LTD

Fingle Drive, Stonebridge  
Milton Keynes, MK13 0ER  
England, United Kingdom  
Tel.: +44 (0)1908 223456  
Fax.: +44 (0)1908 312733  
e.mail: info@niftylift.com

www.niftylift.com